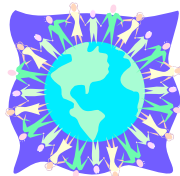


# Financial Matters in CoHo



## HOA Dues

- HOA dues are collected monthly and pay for our CoHo budget, the CoHo reserve fund, and Common House expenses (electric, water, etc.)
- HOA dues are calculated through a formula using the square footage of your unit and the number of people living in your unit.
- It is preferable for the finance team if you pay through direct withdrawal from your bank (ACH transfer). Money is withdrawn on the 20th of the month.
- If you choose to pay by check, payment is due on the 15th.

## Utility Bills



- The finance team sends individualized invoices by the 10th of the month detailing your share of the utility bill combined with your HOA dues.

## Reimbursement Procedures

- If/when you incur an expense for a CoHo work team or for the meal program, fill out the reimbursement form (posted on the website) and give it to the leader of the team within 3 months (or by October 30 if the expense is incurred before the end of the fiscal year).
- You will receive an email telling you when your check is ready.

# Gas Billing

- Due to the construction of our homes, gas metering is done by building and not by household, so we have no way to exactly determine each household's gas usage.
- After much conversation, CoHo has decided the method best aligned with our vision and values for dividing the gas bill is to combine the bill for all buildings and divide it by the square footage of each house.
- We have been working on educating each other on ways to live more sustainably, and as a byproduct, lower our collective gas bill.
- We want to honor those who put forth great effort to reduce their gas bill, so we ask members to self-report their gas usage as being average, below average, and above average. Households that report below average have bills adjusted 10% down, and above average households are adjusted 10% higher.
- In the spring of 2008, households completed a gas usage survey that would help people determine their gas usage compared to other CoHoots. This can be used to give an idea of where their usage falls.
- Several households reported higher usage than they felt they used as a way to help others in the community.
- Utility usage charts are emailed out monthly to let us see our utility usage patterns.



# Water Billing



- Most of our water bill is paid by HOA dues. The excess after that is billed by the number of people reported to be living in your unit.
- When reporting this number, please consider things such as: how often are you home, how often do you have guests, do you have a home business with clients, do you have hobbies that require large amounts of water, how frequent and how long are your showers, how much water you use in dishwashing, etc.
- If you feel you use a lot of water, consider reporting a number higher than the actual number of people living in your home. If you go to great lengths to conserve water, consider reporting a lower number.
- The cost of one reported person's water is less than \$10 per year.

## Information the Finance Team Needs From You

- Your plan for paying HOA dues (direct withdrawal ACH, monthly check)
- Gas usage: above average, average, below average
- Water usage number (number of people living in your home, adjusted as needed)

