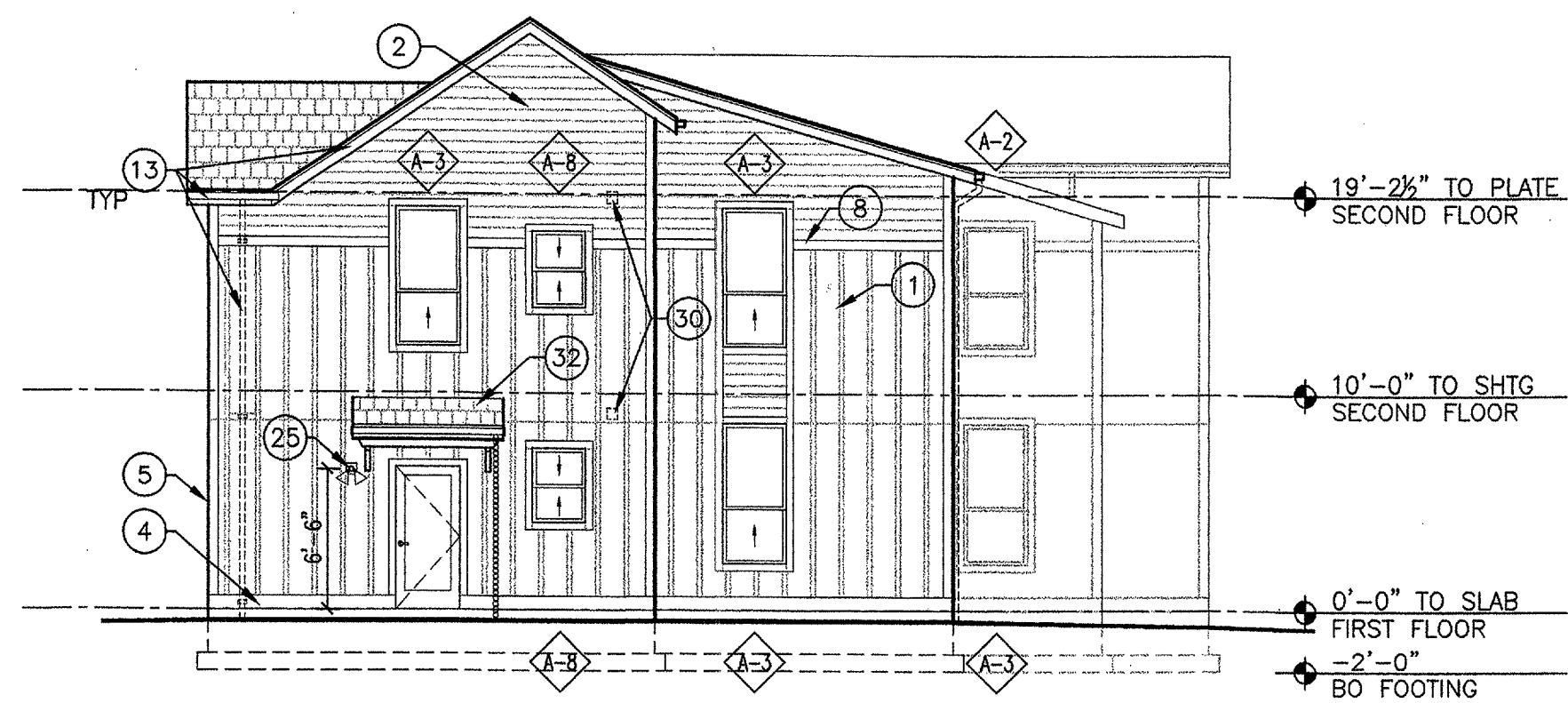
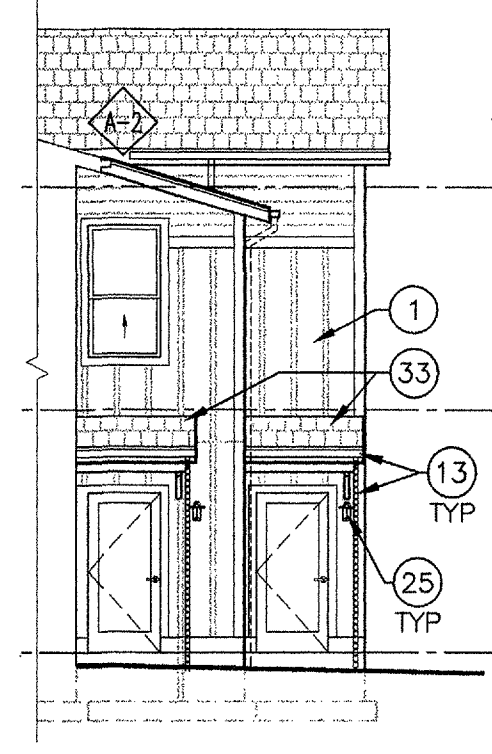


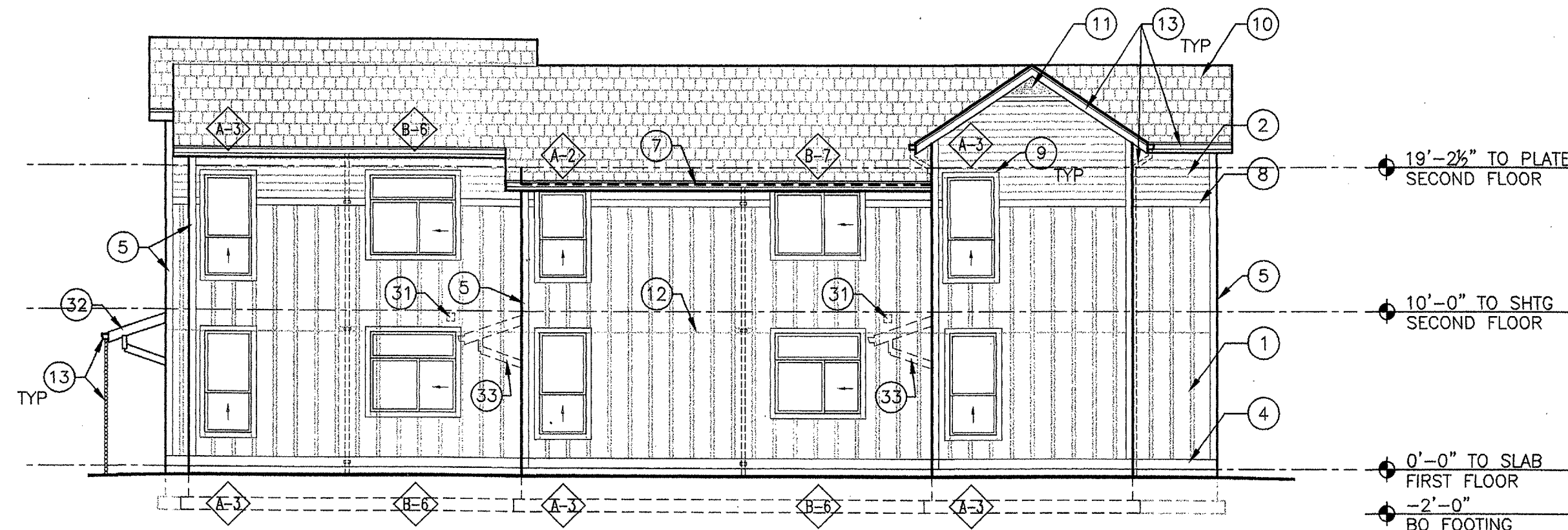
THESE DRAWINGS AND THEIR CONTENT ARE THE PROPERTY OF SERA ARCHITECTS INC. AND ARE EXCLUSIVELY TO BE UTILIZED ON THE PROJECT. REPRODUCTION OF ANY PART OF THIS MATERIAL, WITHOUT THE EXPRESS WRITTEN CONSENT OF SERA ARCHITECTS INC. IS PROHIBITED. SERA ARCHITECTS COPYRIGHT 2006.



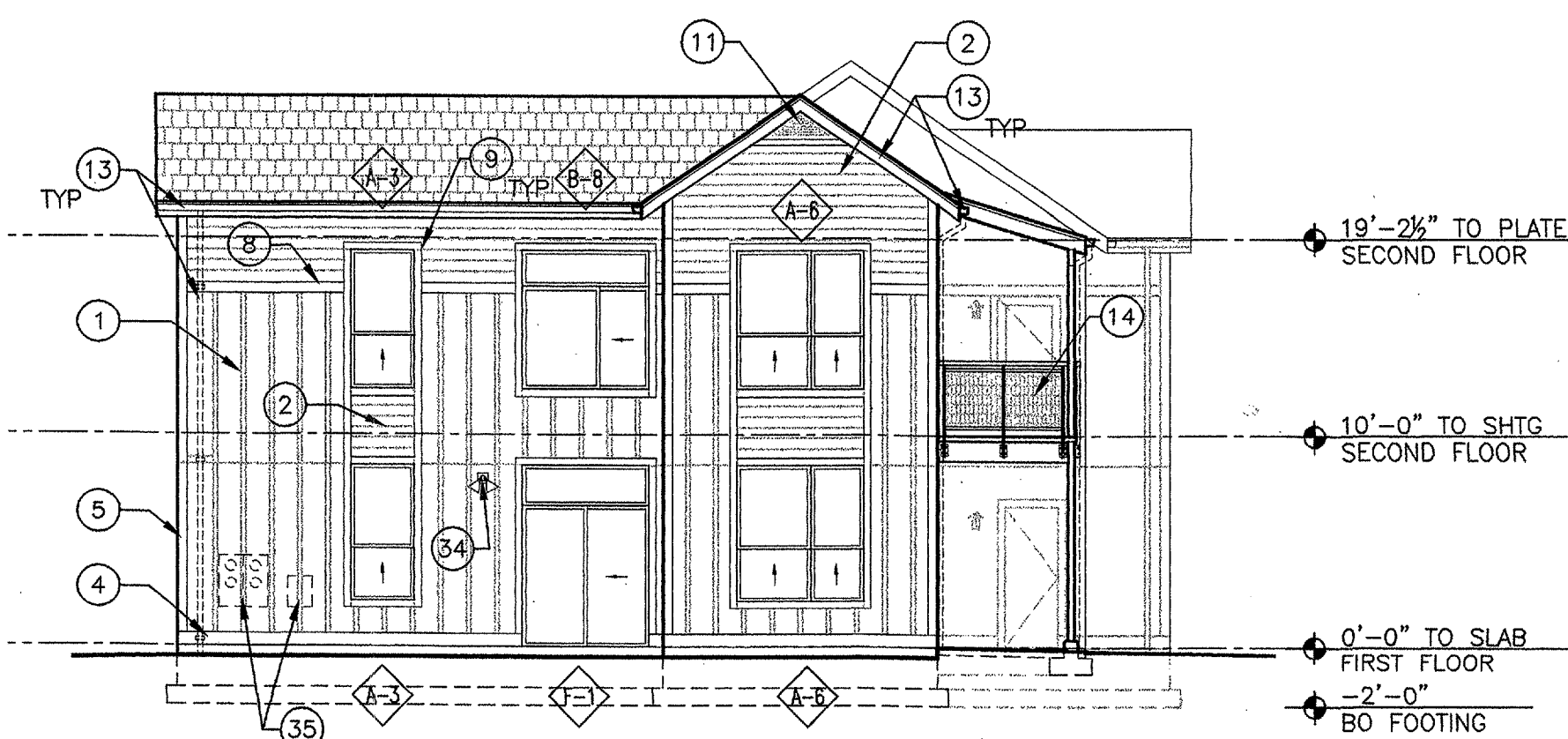
EAST ELEVATION (5)
1/8"=1'-0"



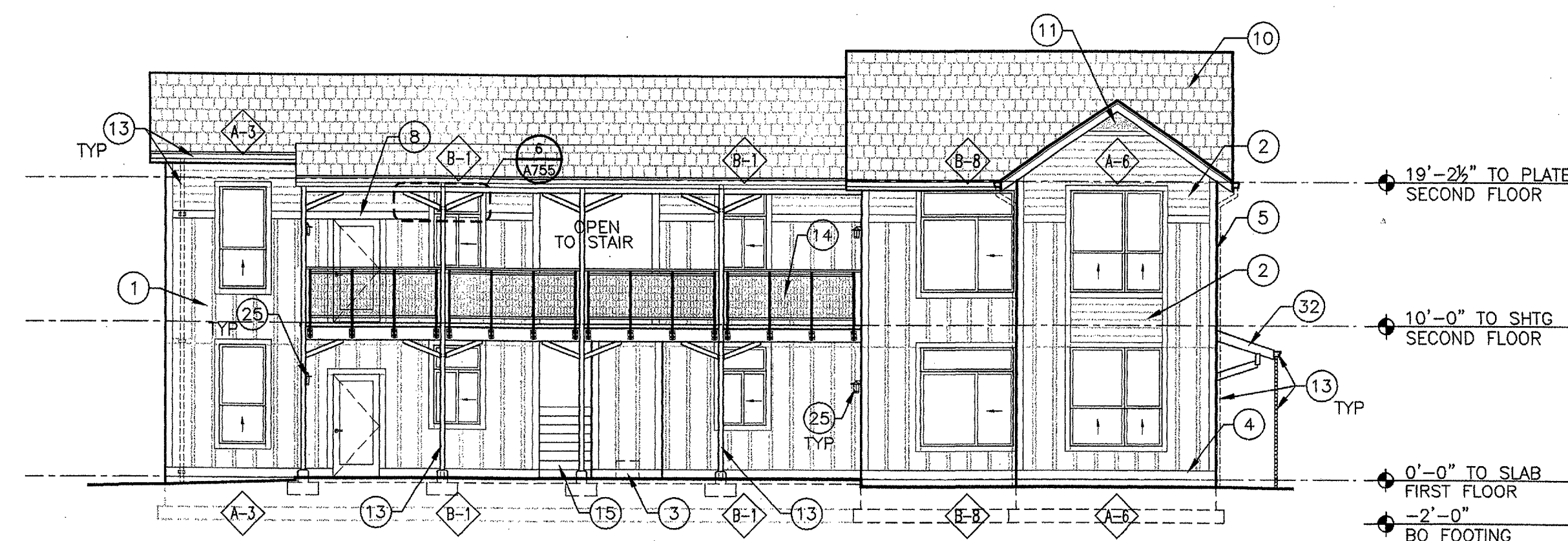
PARTIAL EAST ELEVATION (4)
SEE ALTERNATES 1/8"=1'-0"



NORTH ELEVATION (2)
1/8"=1'-0"



WEST ELEVATION (3)
1/8"=1'-0"



SOUTH ELEVATION (1)
1/8"=1'-0"

GENERAL NOTES

- ELEVATION KEYNOTES APPLY TO SHEETS A410, A411, A420, A421, A422, & A430. ALL KEYNOTES MAY NOT APPEAR ON EACH SHEET AND ONLY APPLY TO SHEETS WHERE NOTED.
- SEE SHEET A710 FOR WINDOW TYPES.
- SEE ELEVATIONS FOR BATTEN LAYOUT POINT. NOTE: LAYOUT OF STUDS REQUIRED FOR FIBER CEMENT PANEL EDGE BACKING AND BATTEN SPACING.
- PROVIDE WOOD TRIM AND SEALANT AT ALL INSIDE CORNERS, SEE DETAIL (7) FOR TYPICAL CONDITION.
- CONTRACTOR TO COORDINATE LOCATIONS OF ALL ELECTRICAL BOXES, VENTS, LIGHTS, HOSE BIBS, BRACKETS, AND OTHER ITEMS MOUNTED TO THE EXTERIOR AND PENETRATING THE BUILDING ENVELOPE WITH BATTEN AND LAP SIDING SPACING. REQUEST LOCATIONS FROM ARCHITECT FOR ANY ITEMS NOT SPECIFICALLY NOTED OR THOSE THAT CONFLICT WITH LOCATION INDICATED.
- PROVIDE A 12" MINIMUM GROUND COVER ON TOP OF FOOTINGS.

KEYNOTES

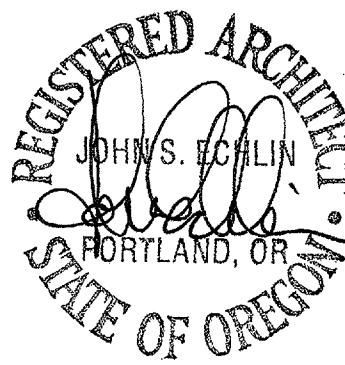
- FIBER CEMENT SIDING TYPE 1 WITH WOOD BATTENS AT 16" OC, SEE (5) AND PT-01
- FIBER CEMENT SIDING TYPE 2, PT-02
- GAS METER, SEE CIVIL DRAWINGS
- BASE TRIM: SEE (4) AND PT-03
- OUTSIDE CORNER TRIM, SEE (5) AND PT-03
- MAILBOXES WITHIN WALL RECESS, SEE PLANS. PROVIDE GYP. SHEATHING AT SOFFIT, PT TO MATCH SIDING.
- DASHED LINE INDICATES LOCATIONS OF ATYPICAL PLATE HEIGHT, SEE SECTIONS
- HORIZONTAL TRIM: 3/4"X6 FIBER CEMENT TRIM, (3/4"X6 WOOD TRIM AT CONTRACTOR'S OPTION), SEE (8) AND PT-03
- DOOR/WINDOW TRIM, TYPICAL: 1X4 WOOD TRIM, PT-04
- ASPHALT (ARCHITECTURAL COMPOSITION) SHINGLE ROOF
- GABLE VENT, SEE SPECIFICATIONS, PT-05
- SIDING TYPE 1 JOINT, SEE (7)
- 3/8"X7/8" FIBER CEMENT FACIA, PT-05. SHEET METAL GUTTER AND DOWNSPOUT OR RAINCHAIN, AS SHOWN, SEE SPECIFICATIONS AND DETAILS (10), (11), (12)
- PORCH RAILING, SEE (7), (10)
- WOOD FRAMED STAIR WITH CONCRETE/PRECAST TOPS, SEE A600 SHEETS
- CORNER WINDOW DETAIL, SEE (3)
- TRASH ENCLOSURE WALLS, SEE A753
- NOT USED
- GATE, SEE DETAIL (6)
- 3" DIAMETER DOWNSPOUT, SEE DETAIL (11) FOR STRAP CONNECTIONS.
- LOUVER, SEE MECHANICAL DRAWINGS.
- SOLAR PANELS, SEE MECHANICAL DRAWINGS.
- NOT USED
- DOWNSPOUT TO LOWER ROOF. PROVIDE BENT OUTLET AT BASE OF DOWNSPOUT
- FRONT PORCH LIGHT FIXTURE, SEE ELECTRICAL DRAWINGS AND DETAIL (8) FOR LOCATION. MOUNT AT 6'-4" AFF UNO. (8) FIXTURE, SWITCH AND ALL ELECTRICAL TO BE PART OF ALTERNATE.
- TRIM AT WALL END, SEE DETAIL (10)
- 3" DIA DOWNSPOUT AT DOUBLE COLUMNS, SIM TO DTL (11)
- BIKE RACK, SEE DETAIL (4)
- GAS APPLIANCE EXHAUST FLUE, SEE MECHANICAL DRAWINGS. FLUE TO EXTEND ABOVE ADJACENT ROOF PER CODE.
- BATHROOM EXHAUST VENT, SEE MECHANICAL DRAWINGS. CENTER BETWEEN BATTENS AND ALIGN VERTICALLY
- DRYER VENT HOOD, SEE MECHANICAL DRAWINGS AND ALTERNATES. CENTER BETWEEN BATTENS AND ALIGN VERTICALLY
- DOOR CANOPY, SEE (11)
- ALTERNATE DOOR CANOPY, SEE (11). PROVIDE A PER UNIT PRICE.
- BACK DOOR LIGHT FIXTURE, SEE ELECTRICAL AND DETAILS (8) MOUNT AT 8'-0" AFF UNO
- ELECTRICAL POWER SERVICE AND LOW VOLTAGE CABINET, SEE SHEET E100
- SHEET METAL BEAM COVERS, SEE DETAIL (3)
- SOLAR HOT WATER SYSTEM, SEE MECHANICAL
- SHEET METAL COPING
- GATE - SEE DETAILS (7)

DRAWN BY: BAW
CHECKED BY:



SERA ARCHITECTS INC
338 NW 5TH AVE.
PORTLAND, OR 97209
TEL: 503-445-7372
FAX: 503-445-7395
EMAIL: sera@serapdx.com

PRESERVING OUR HISTORY
DESIGNING THE FUTURE



CORVALLIS COHOUSING
 DEVELOPER: CORVALLIS NEIGHBORHOOD HOUSING SERVICES
 CLIENT: COHO

REVISIONS

**BUILDINGS 1 & 3
ELEVATIONS**

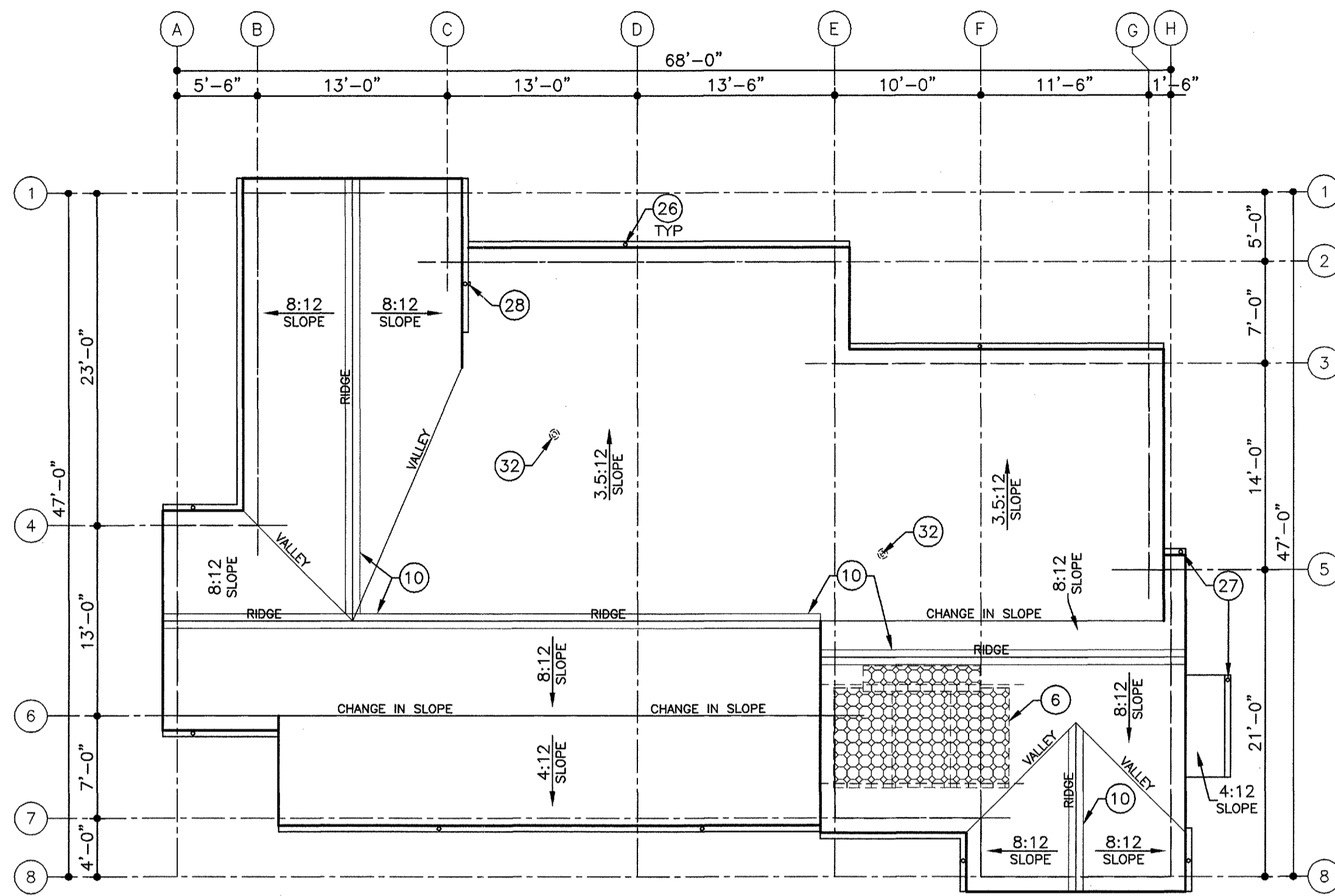
ISSUE DATE: 31 MARCH 2006
PROJECT NO.: 032024

SHEET

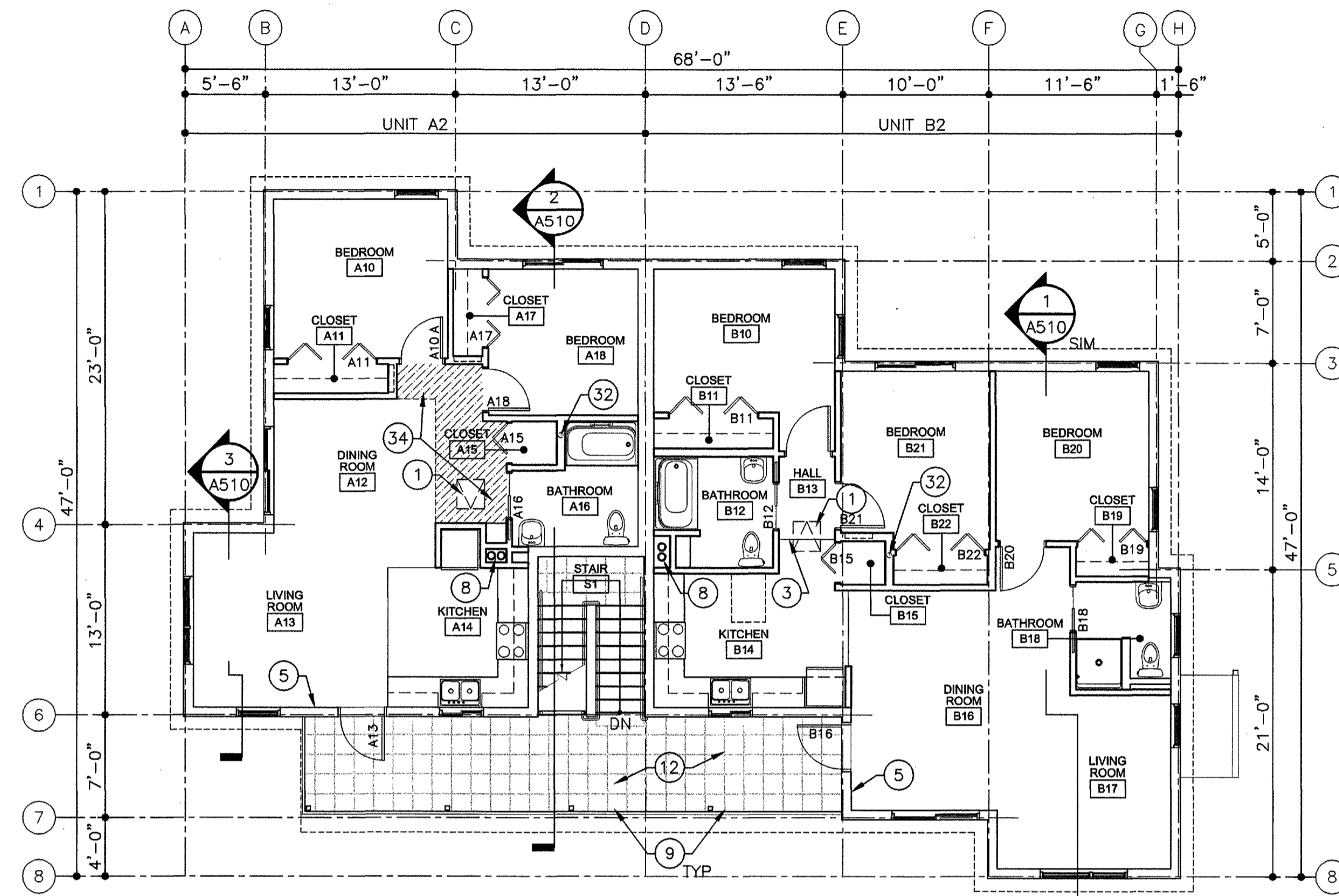
A410

PERMIT SET

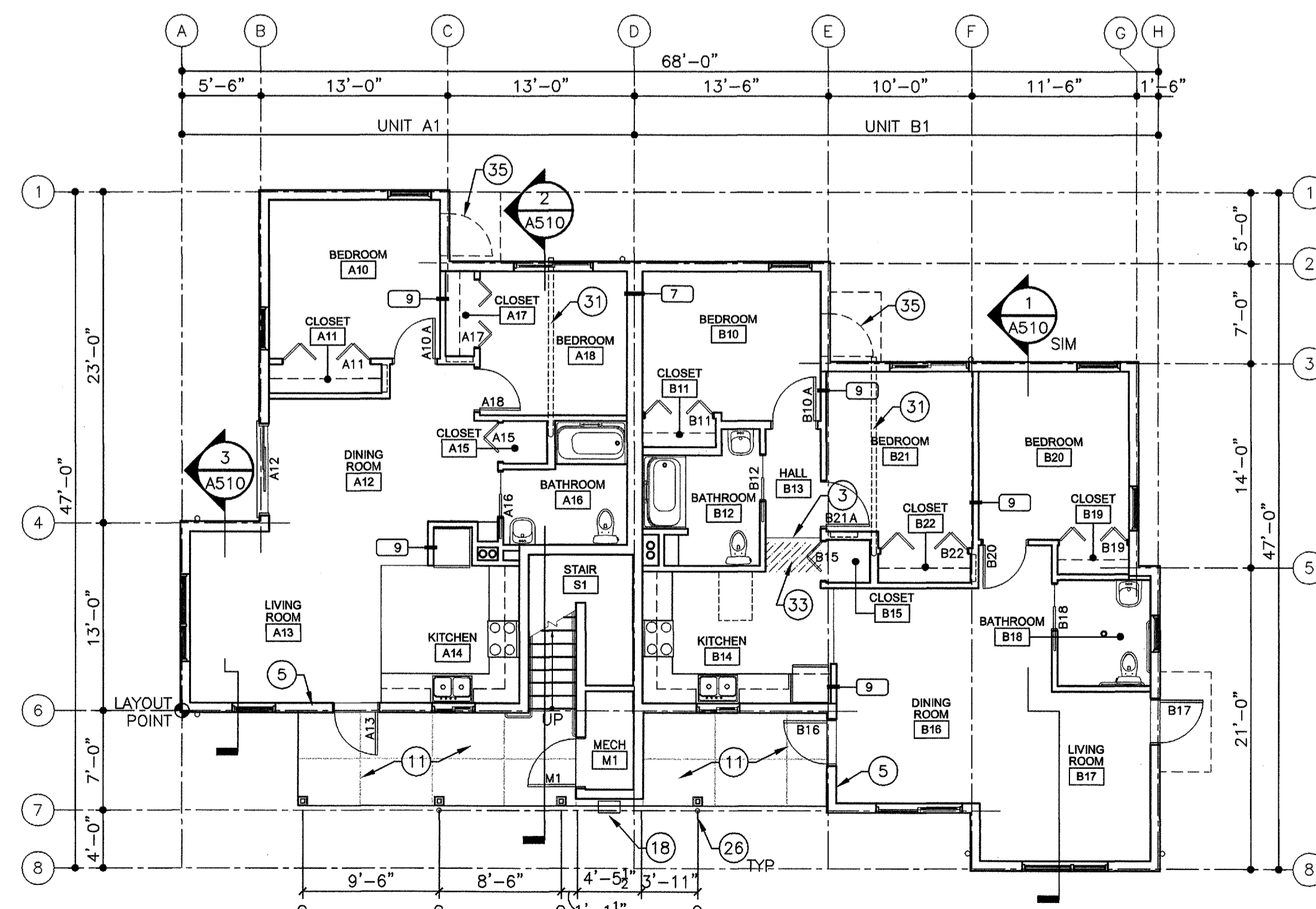
THESE DRAWINGS AND THEIR CONTENT ARE THE PROPERTY OF SERA ARCHITECTS INC. AND ARE EXCLUSIVELY TO BE UTILIZED FOR THE PROJECT. REPRODUCTION OF ANY PART OF THIS MATERIAL, WITHOUT THE EXPRESS WRITTEN CONSENT OF SERA ARCHITECTS IS PROHIBITED. SERA ARCHITECTS COPYRIGHT 2004.



ROOF PLAN 3
1/8"=1'-0"



SECOND FLOOR PLAN 2
1/8"=1'-0"



FIRST FLOOR PLAN 1
1/8"=1'-0"

GENERAL NOTES

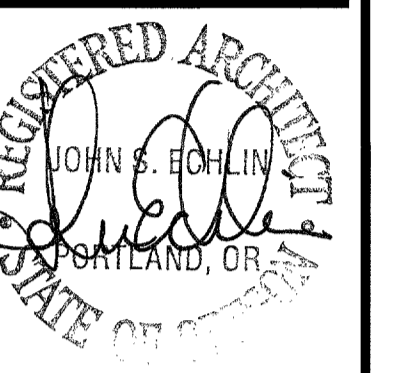
- FLOOR PLAN KEYNOTES APPLY TO SHEETS A110 THROUGH A130. ALL KEYNOTES MAY NOT OCCUR ON EACH SHEET.
- PROVIDE A LISTED FIRESTOP CONT @ PERIMETER / GAPS OF ALL RATED CONSTRUCTION AS REQUIRED TO MAINTAIN THE SPECIFIED RATING.
- ALL EXTERIOR WALLS ARE TO BE WALL TYPE 4 UNO. SEE STRUCTURAL DRAWINGS FOR SHEATHING. SEE ELEVATIONS FOR SIDING TO COORDINATE STUD LAYOUT W/ SIDING SPACING. ASSUME ADVANCED FRAMING TECHNIQUES ARE EMPLOYED.
- ALL INTERIOR WALLS ARE TO BE WALL TYPE 8 UNO.
- SEE DETAIL (7) FOR TYPICAL DEMISING WALL BETWEEN UNITS.
- BUILDING 1, 2, 3, AND 4 GROUND FLOOR UNITS ARE TO BE ADA ADAPTABLE. SEE ENLARGED PLANS AND ELEVATIONS FOR ADDITIONAL REQUIREMENTS.
- EXTEND FLOORING UNDER SINKS IN ADA ADAPTABLE UNITS. EXTEND FLOORING UNDER REFRIG AND DW ALL UNITS.
- SEE SHEET A320, A321, & A330 FOR ENLARGED KITCHEN PLANS AND ELEVATIONS.
- PROVIDE A 14" DEEP SHELF AND CLOSET ROD FOR ALL CLOSETS UNO.
- SEE SHEETS A322, A323, A324 & A331 FOR ENLARGED BATHROOM PLANS AND ELEVATIONS.
- SEE ALTERNATES FOR POTENTIAL INDIVIDUAL UNIT SELECTIONS TO INCLUDE IN PRICING.
- REFER TO SITE PLAN FOR GENERAL ORIENTATION TO DETERMINE ELEVATIONS.
- SEE A600 SERIES SHEETS FOR ENLARGED STAIR PLANS AND SECTIONS.

KEYNOTES

- PROVIDE 24" X 30" ACCESS HATCH IN CEILING. PROVIDE R20 INSULATION MINIMUM AND CONTINUOUS WEATHERSTRIPPING FOR AIRTIGHT SEAL.
- PROVIDE 24" WIDE X 36" HIGH PLYWOOD ACCESS PANEL. PAINT PT-XX.
- FLOOR TRANSITION - CARPET TO LINOLEUM, SEE AND ROOM FINISH SCHEDULE FOR ALTERNATES.
- LINEN CLOSET - PROVIDE (6) 12" DEEP SHELVES; USE ADJUSTABLE BRACKETS AND STANDARDS. SEE (5) A852.
- PROVIDE CONTINUOUS BLOCKING IN WALL FOR COAT HOOKS @ 5'-0" A.F.F. PROVIDE (3) HOOKS PER UNIT @ 8" OC, CENTER ON SECTION OF WALL INDICATED. (6) HOOKS AT COMMON HOUSE.
- HATCH AREA INDICATES LOCATION OF FUTURE SOLAR HOT WATER SYSTEM, NO ROOF PENETRATIONS IN THIS AREA, SEE MECHANICAL.
- CABINET SHOWN NIC - PROVIDE BLOCKING IN WALL.
- CHASE FOR EXHAUST FAN DUCT - INSULATE ALL WALLS. PROVIDE WALL MOUNTED ACCESS PANEL FOR FIRE DAMPER AT DUCT PENETRATION THROUGH RATED FLOOR ASSEMBLY.
- PORCH RAILING, SEE SHEET A755.
- CONTINUOUS RIDGE VENT
- 4" CONC SLAB ON GRADE W/ 4" COMPACTED GRAVEL BASE
- CONCRETE PAVERS ON SLOPED FRAMING.
- SHELVING IN PANTRY BY OWNER. PROVIDE BLOCKING IN WALL. PROVIDE BATT INSULATION (SIZE TO FILL CAVITY) IN ALL WALLS OF PANTRY.
- SEE ENLARGED PLAN AND ELEVATIONS SHEETS FOR CABINETS
- SEE SHEET A852 FOR INTERIOR ELEVATIONS
- STORAGE CUBES WITH BENCH, SEE INTERIOR ELEVATIONS, SHEET A850
- CABINET BY OWNER. PROVIDE BLOCKING IN WALLS. SEE SHEETS A850 & A851 FOR CABINET DESIGN.
- GAS METER, VERIFY EXACT LOCATION WITH UTILITY PROVIDER.
- PROVIDE BLOCKING FOR CABINET NIC. CABINET WILL BE 2'-0" DEEP X 5'-0" LONG WITH ADJACENT WINDOW SEAT AND FULL HEIGHT SHELVES.
- BASE CABINET WITH SINK - WITH LAUNDRY TUB - SEE INTERIOR ELEVATIONS, SHEET A851.
- HATCH INDICATES PATTERN FOR LINOLEUM ACCENT COLOR. REMAINDER OF FLOOR TO BE BASE COLOR.
- 2'-0" DEEP BASE CABINET IN DINING ROOM WITH BUILT-IN UNDER CABINET REFRIGERATOR AND BAR SINK. SEE SHEET A850
- FREESTANDING GAS APPLIANCE WITH TILE HEARTH, SEE ELEVATIONS SHEET A851.
- SOLAR HOT WATER SYSTEM, COORDINATE ALL ROOF PENETRATIONS, SEE MECHANICAL.
- MAILBOXES - SEE SPECIFICATIONS.
- 3" Ø DOWNSPOUT, SEE ELEVATIONS AND DETAIL (11) A757 FOR STRAP CONNECTION.
- RAIN CHAIN.
- DOWNSPOUT TO LOWER ROOF.
- PROVIDE BLOCKING IN WALL FOR FUTURE SHELVES N.I.C.
- NOT USED
- SEE ALTERNATE NO. 8 - RIGID DRYER VENT UP WALL AND THROUGH JOIST SPACE TO EXTERIOR. VERIFY PENETRATIONS WITH FLOOR JOIST DESIGNER AND MECH DRAWINGS. PROVIDE GALV WALL CAP, PREP AND PAINT TO MATCH ADJACENT SIDING COLOR.
- SEE ALTERNATE NO. 8 - RIGID DRYER VENT UP WALL AND THROUGH ATTIC TO EXTERIOR. PROVIDE BROAN-NUTONE #634 ROOF CAP IN BLACK.
- 2'-0" GB SOFFIT AT 8'-0" AFF. ALIGN FACE OF SOFFIT WITH FACE OF WALL.
- GB SOFFIT AT 8'-2" AFF. ALIGN FRAMING WITH BO TRUSSES, SEE STRUCTURAL DRAWINGS
- SEE ALTERNATE NO. 10 - ADD DOOR OR REPLACE WINDOW WITH DOOR. SEE ELEVATIONS FOR ADDED CANOPY.
- FUR WALL AS NECESSARY TO PROVIDE FLUSH SUBSTRATE FOR GB INSTALLATION.

DRAWN BY: _____ JWL
 CHECKED BY: _____
SERA
 SERA ARCHITECTS INC
 338 NW 5TH AVE.
 PORTLAND, OR 97209
 TEL: 503.445.7372
 FAX: 503.445.7395
 EMAIL: sera@serapdx.com

PRESERVING OUR HISTORY
 DESIGNING THE FUTURE



CORVALLIS COHOUSING
 DEVELOPER: CORVALLIS NEIGHBORHOOD HOUSING SERVICES
 CLIENT: COHO

REVISIONS
 PLAN REVIEW RESPONSE
 9 JUNE 2006

BUILDINGS 1 & 3
 PLANS

ISSUE DATE: 14 JUNE 2006
 PROJECT NO.: 032024

SHEET
A110
 GMP SET