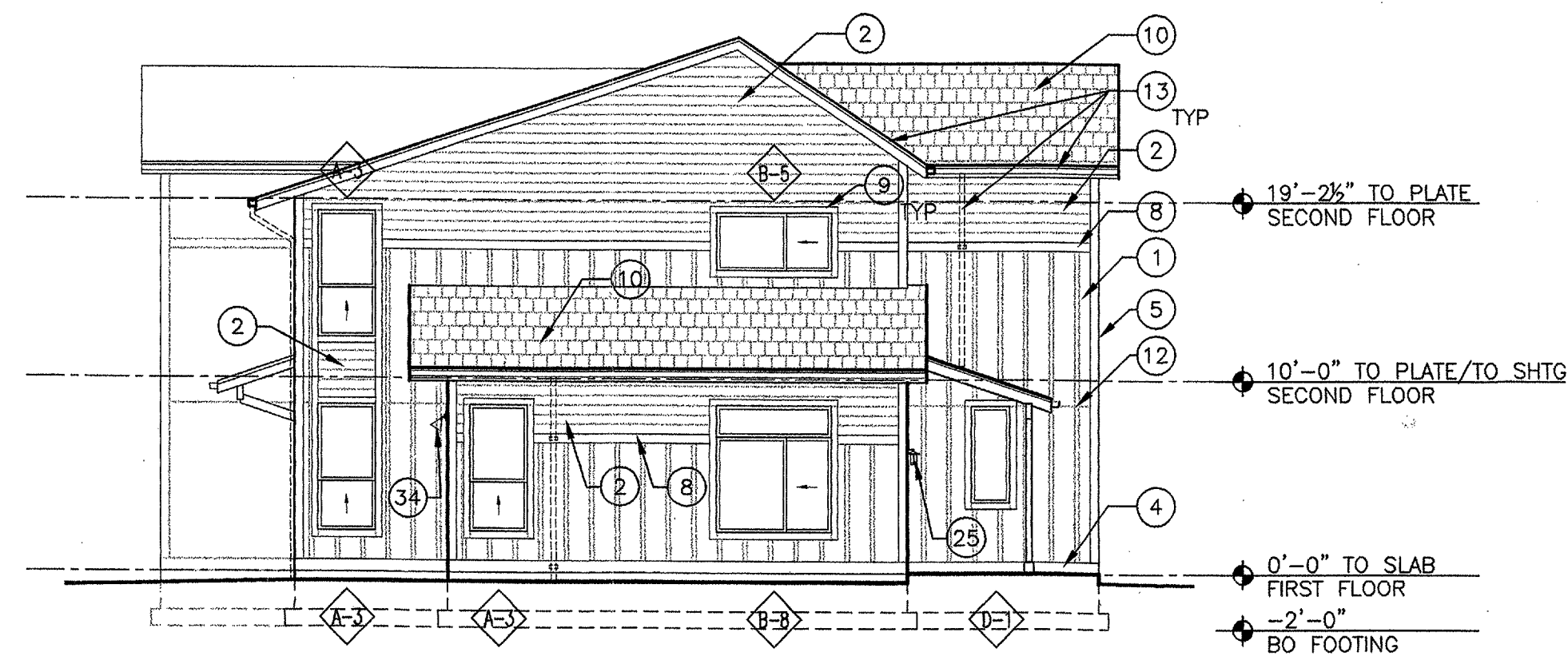
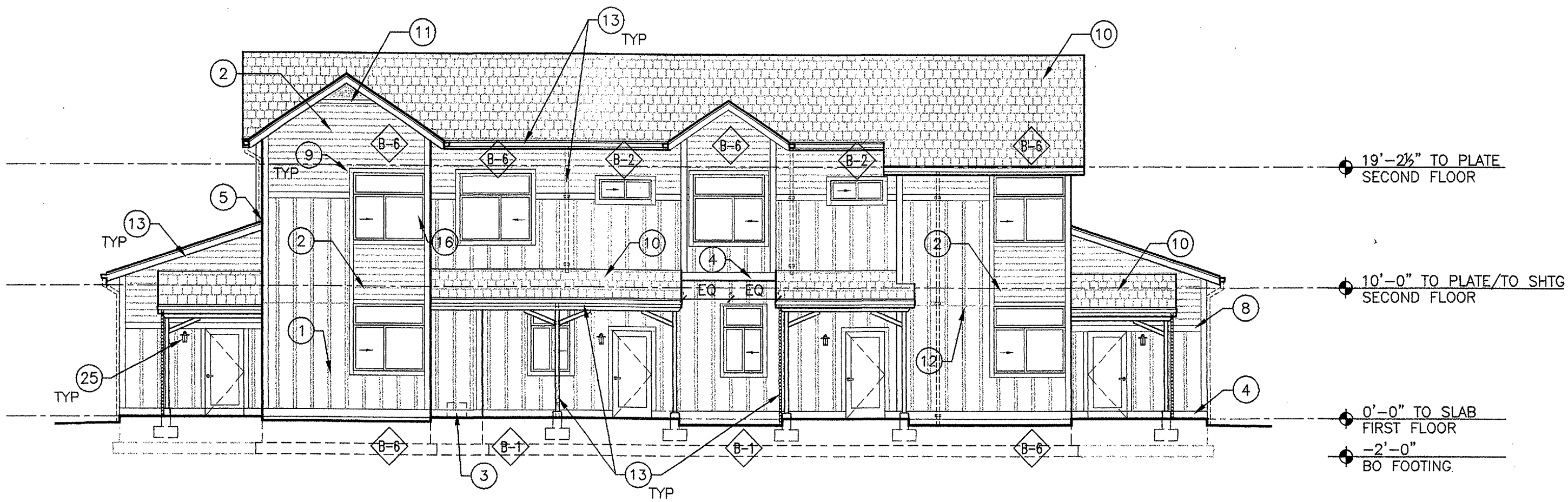


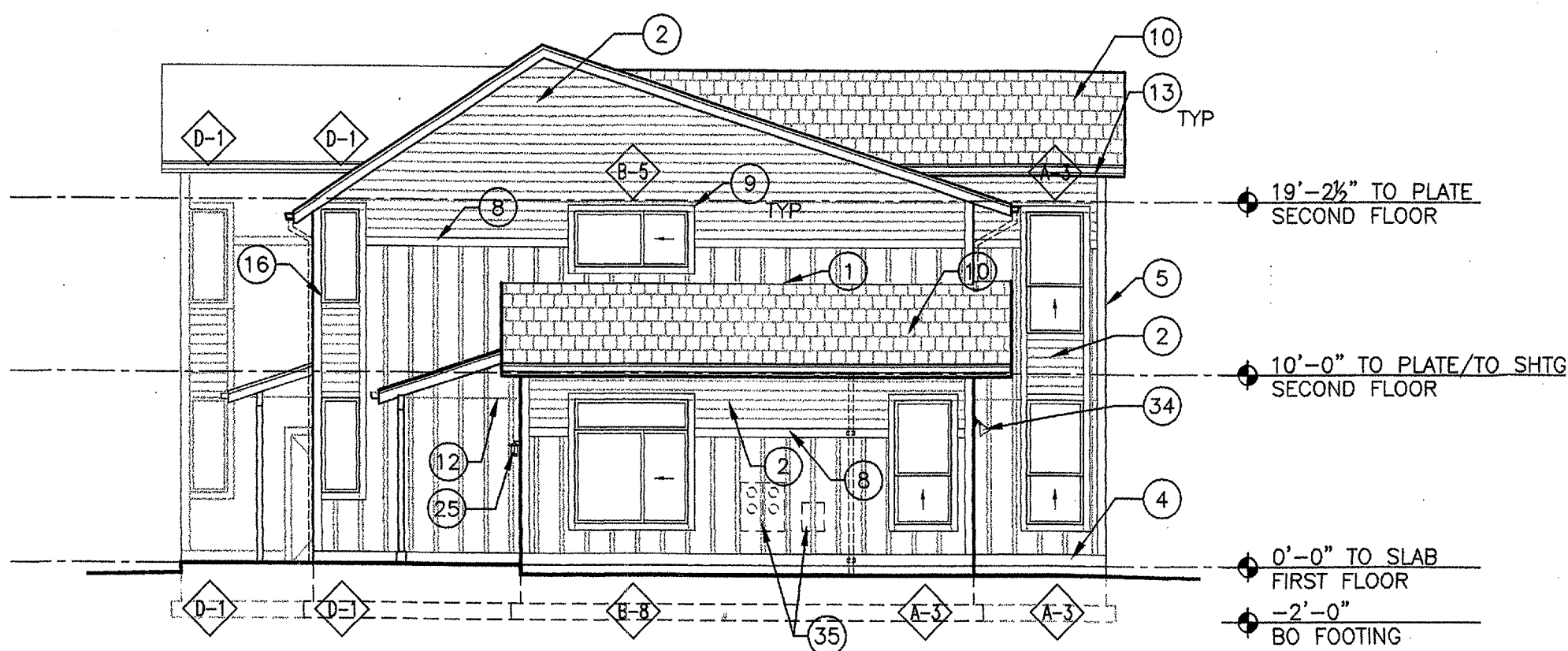
USER: \\projects\projects\02021 CORVALLIS COHOUSING\DOUBLEHOUSING\02\DWG 3/20/2006 11:30 AM - OCE TDS601-HLP-PC3 11:38.00 X 24.00 INCHES
 These drawings and their content are the property of SERA Architects Inc. and are exclusively to be utilized on this project. Reproduction of any part of this material, without the express written consent of SERA Architects Inc. is prohibited. SERA ARCHITECTS COPYRIGHT 2006



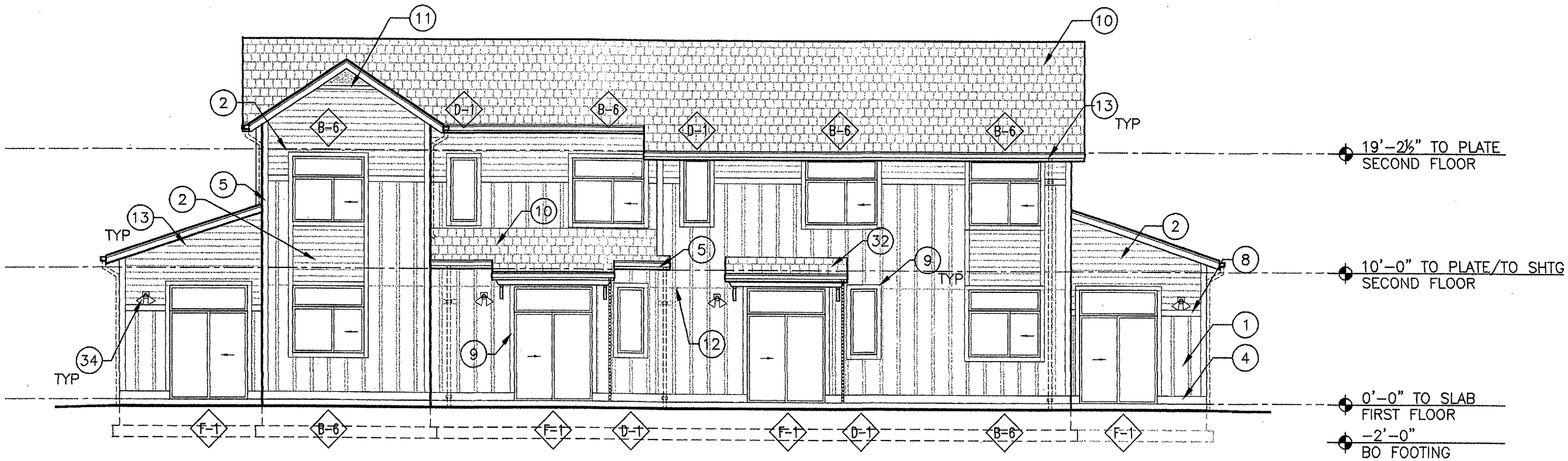
EAST ELEVATION 4
1/8"=1'-0"



NORTH ELEVATION 2
1/8"=1'-0"



WEST ELEVATION 3
1/8"=1'-0"



SOUTH ELEVATION 1
1/8"=1'-0"

GENERAL NOTES

- ELEVATION KEYNOTES APPLY TO SHEETS A410, A411, A420, A421, A422, & A430. ALL KEYNOTES MAY NOT APPEAR ON EACH SHEET AND ONLY APPLY TO SHEETS WHERE NOTED.
- SEE SHEET A710 FOR WINDOW TYPES.
- SEE ELEVATIONS FOR BATTEN LAYOUT POINT. NOTE: LAYOUT OF STUDS REQUIRED FOR FIBER CEMENT PANEL EDGE BACKING AND BATTEN SPACING.
- PROVIDE WOOD TRIM AND SEALANT AT ALL INSIDE CORNERS, SEE DETAIL A752 FOR TYPICAL CONDITION.
- CONTRACTOR TO COORDINATE LOCATIONS OF ALL ELECTRICAL BOXES, VENTS, LIGHTS, HOSE BIBS, BRACKETS, AND OTHER ITEMS MOUNTED TO THE EXTERIOR AND PENETRATING THE BUILDING ENVELOPE WITH BATTEN AND LAP SIDING SPACING. REQUEST LOCATIONS FROM ARCHITECT FOR ANY ITEMS NOT SPECIFICALLY NOTED OR THOSE THAT CONFLICT WITH LOCATION INDICATED.
- PROVIDE A 12" MINIMUM GROUND COVER ON TOP OF FOOTINGS.

KEYNOTES

- FIBER CEMENT SIDING TYPE 1 WITH WOOD BATTENS AT 16" OC, SEE A750 PT-01
- FIBER CEMENT SIDING TYPE 2, PT-02
- GAS METER, SEE CIVIL DRAWINGS
- BASE TRIM: SEE A750 AND PT-03
- OUTSIDE CORNER TRIM, SEE A750 AND PT-03
- MAILBOXES WITHIN WALL RECESS, SEE PLANS. PROVIDE GYP. SHEATHING AT SOFFIT, PT TO MATCH SIDING.
- DASHED LINE INDICATES LOCATIONS OF ATYPICAL PLATE HEIGHT, SEE SECTIONS
- HORIZONTAL TRIM: 3/4"X6 FIBER CEMENT TRIM, (5/8"X6 WOOD TRIM AT CONTRACTOR'S OPTION), SEE A750 AND PT-03
- DOOR/WINDOW TRIM, TYPICAL: 1X4 WOOD TRIM, PT-04
- ASPHALT (ARCHITECTURAL COMPOSITION) SHINGLE ROOF
- GABLE VENT, SEE SPECIFICATIONS, PT-05
- SIDING TYPE 1 JOINT, SEE A750
- 3/16"X7/8" FIBER CEMENT FACIA, PT-05. SHEET METAL GUTTER AND DOWNSPOUT OR RAUNCHAIN, AS SHOWN, SEE SPECIFICATIONS AND DETAILS A751 A751 A751
- PORCH RAILING, SEE A755 A755
- WOOD FRAMED STAIR WITH CONCRETE/PRECAST TOPS, SEE A600 SHEETS
- CORNER WINDOW DETAIL, SEE A752
- TRASH ENCLOSURE WALLS, SEE A753
- NOT USED
- GATE, SEE DETAIL A753
- 3" DIAMETER DOWNSPOUT, SEE DETAIL A751 FOR STRAP CONNECTIONS.
- LOUVER, SEE MECHANICAL DRAWINGS.
- SOLAR PANELS, SEE MECHANICAL DRAWINGS.
- NOT USED
- DOWNSPOUT TO LOWER ROOF. PROVIDE BENT OUTLET AT BASE OF DOWNSPOUT
- FRONT PORCH LIGHT FIXTURE, SEE ELECTRICAL DRAWINGS AND DETAIL A750 FOR LOCATION. MOUNT AT 6'-4" AFF UNO.
- TRIM AT WALL END, SEE DETAIL A750
- 3" DIA DOWNSPOUT AT DOUBLE COLUMNS, SIM TO DTL A755
- BIKE RACK, SEE DETAIL A051
- GAS APPLIANCE EXHAUST FLUE, SEE MECHANICAL DRAWINGS. FLUE TO EXTEND ABOVE ADJACENT ROOF PER CODE.
- BATHROOM EXHAUST VENT, SEE MECHANICAL DRAWINGS. CENTER BETWEEN BATTENS AND ALIGN VERTICALLY
- DRYER VENT HOOD, SEE MECHANICAL DRAWINGS AND ALTERNATES. CENTER BETWEEN BATTENS AND ALIGN VERTICALLY
- DOOR CANOPY, SEE A755
- ALTERNATE DOOR CANOPY, SEE A755. PROVIDE A PER UNIT PRICE.
- BACK DOOR LIGHT FIXTURE, SEE ELECTRICAL AND DETAILS A750 MOUNT AT 8'-0" AFF UNO
- ELECTRICAL POWER SERVICE AND LOW VOLTAGE CABINET, SEE SHEET E100
- SHEET METAL BEAM COVERS, SEE DETAIL A753
- SOLAR HOT WATER SYSTEM, SEE MECHANICAL
- SHEET METAL COPING
- GATE - SEE DETAILS A753

DRAWN BY: _____
 CHECKED BY: _____
SERA
 SERA ARCHITECTS INC
 338 NW 5TH AVE.
 PORTLAND, OR 97209
 TEL: 503.446.7372
 FAX: 503.446.7306
 EMAIL: sera@serapdx.com

PRESERVING OUR HISTORY
 DESIGNING THE FUTURE

REGISTERED ARCHITECT
 JOHN S. SCHLAIN
 PORTLAND, OR
 STATE OF OREGON

CORVALLIS COHOUSING
 DEVELOPER: CORVALLIS NEIGHBORHOOD HOUSING SERVICES
 CLIENT: COHO

REVISIONS

**BUILDING 5
 ELEVATIONS**

ISSUE DATE: 31 MARCH 2006
 PROJECT NO.: 032024

SHEET
A420

PERMIT SET

